



WIZARDS PTA NEWS

Woodlin Elementary Parent Teacher Association Newsletter September 2008

Volume 2, Issue 2

PRESIDENT'S CHAT

I hope all of our children and families are getting settled into the new school year. On behalf of the PTA, I want to thank the entire school administration, especially Mrs. Sirgo and Mr. Clarke for their strong leadership in the aftermath of the fire that destroyed Mrs. Chapman's music room. We are grateful that no one was hurt, that our children's instruction continued without missing a beat, and for the prompt communication provided to all our families.

●The PTA has been working hard as well, and I want to share some thanks to the following folks:

●The teacher appreciation crew, Jeannette O'Connor, Eve Zimmerman, and Monica Keams, for their great welcome back breakfast for the teachers!

●Open House volunteers, Mary Press and Laurie McWright, for

organizing the event and getting all those popsicles!

●Sally Foster skit "volunteers" Tony Byrne and Troy Clarke, for their great athleticism!

●Our new Woodlin webmaster, Jane Curtin, for the great new PTA website.

●All of our new and lead volunteers, and our new PTA baby-sitting coordinator, Christine Sona-bend, for making our first PTA meeting a great success!

●Woodlin's own pizza lady, Carol Woodside, for making sure everyone had pizza at the first PTA meeting!

●The Woodlin Parent Resource Center Coordinator, Shelly Duckett, for putting together a welcoming space where parents and families can help one another.



President Lynne Yao

I was so proud of the turnout, energy, and enthusiasm from our community at our first PTA meeting! Our committee chairs and lead volunteers collected a small army of new volunteers. Study Circles looks like a fantastic opportunity to work on understanding our cultural and ethnic diversity to make our school a richer environment for our children and ourselves. I want to reiterate my comments

from the Back to School nights and first PTA meeting. A major focus of our PTA this year is to encourage and welcome participation from all in the Woodlin community. There is no voice too soft, no idea too small, and no help too minor in this PTA—and it's a great way to enhance our children's educational experience.

(continued on page 2)

It's A Sprint to the Finish for Sally Foster Sale

Don't drop the baton! Turn in your orders for this year's Sally Foster gift wrap and chocolate sale by Wednesday, Sept. 24. Pick-up day for orders is at the school on Monday, Oct. 13, which is Columbus Day and Woodlin's Parent Day.

As always, half of all sales from the fall fundraiser go straight to the Woodlin PTA to help pay for field trips, after-school clubs, social activities, and other programs that

benefit students. Don't need wrapping pa-

per? Make a direct donation and all of your money will go straight to Woodlin's PTA. Direct donations are tax-deductible.

During these times of penny-pinching and greater environmental awareness, the Sally Foster team would like to note a few things:

▼You can find some bargains—all items are \$20 or less. For example, some gift bag, tag and tissue sets sell for as low as \$1.50 each.



Jane Curtin and Troy Clarke begin the Sally Foster sprint

(continued on page 2)

Table of Contents

| | |
|---|---|
| President's Chat | 1 |
| It's A Sprint to the Finish for Sally Foster Sale | 1 |
| PTA Membership Drive | 2 |
| Log Volunteer Hours! | 2 |
| Next PTA Meeting | 2 |
| Celebrate Hispanic Heritage Month | 3 |
| Principal's Corner | 3 |
| Changes in Behavior Code | 4 |
| Girl Scouts Troops Accepting New Girls | 4 |
| Woodlin PTA Staff Board Members | 4 |
| Reading Is More Than Fundamental! | 5 |
| Hispanic Heritage Events Around Town | 5 |
| Woodlin Jewelry Fundraiser | 5 |
| Communication and Relationship Building | 6 |
| Building Great Boys and Fun! | 7 |
| Woodlin After School Schedule | 7 |
| Woodlin T-Shirts: Get Them While Their Hot! | 7 |
| Applause! Applause! Applause! | 7 |
| Wanted: After School Coordinator | 7 |
| Quick and Easy Fundraising | 7 |
| Room Parents Needed | 8 |
| Shop and Help Woodlin | 8 |
| Woodlin PTA Membership Applications | 8 |
| Important School Dates | 8 |
| Woodlin's Parent Resource Room | 8 |

Woodlin Elementary
PTA
everychild.onevoice.

It's A Sprint to the Finish for Sally Foster Sale

(continued from page 1)

▼ Many Sally Foster products are earth-friendly. More than 75 percent of the gift wrap papers are recyclable and biodegradable. And 22 of the papers are printed on recycled stock. Additionally, the gift wraps are acid-free—great for scrapbooking.

Make a *direct donation* and all of your money will go straight to Woodlin's PTA. Direct donations are tax-deductible!

▼ And new this year, students can earn prizes based on the number of items sold. Top sellers earn additional prizes, including an iPod Nano. Details about the prize program are in the catalog that went home with students earlier this month.

▼ Finally, out-of-towners can order products online by logging on to



The Sally Foster team wins—including (left to right) Jane Curtin, Vickie Rocha, Mary Press, Tony Byrne, and Troy Clarke

www.woodlinpta.org, which contains a direct link to Sally Foster.

If you have questions about the sale, contact Jane Curtin, Sally Foster co-chair, at jane_curtin@yahoo.com, or 301-565-2411.

—Vickie Rocha

PTA Membership Drive

Everyone must rejoin and pay dues every year!

The Woodlin PTA depends on your membership dues and donations to support our many programs. PTA dues help fund important activities such as: after school clubs, tutoring, and science programs, the foreign language program (FLES), special grade-level activities, student directory, newsletter, supplementary breakfast and lunch meals for kids in need, dinner and babysitting during PTA meetings, and many other great activities and events.

Look for the Woodlin PTA Membership form in your child's backpack or download it from the Woodlin PTA website.

If you have any questions, contact, Mary Press at mepress@starpower.net or 301-588-3011.

—Mary Press

Join us for Dinner and Movie on Friday, September 26. Look for backpack flyer and listserv for more information.

—Shelly Duckett, Dinner and Movie Coordinator

President's Chat

(continued from page 1)

Our PTA is full of energetic, organized, and committed volunteers, but we need more volunteers in several important positions. Take a look at the Help Wanted section of the PTA website (www.woodlinpta.org) and in this newsletter for volunteer needs. Even if you can't commit to a position within the PTA, we would love to have your involvement with any of our six committees—membership, outreach, events, enrichment, fund-raising, and health and the outdoors.

Here's a list of the upcoming PTA events:

The Sally Foster sale, a critically important fundraiser for the PTA, ends Sept. 24. Its success helps to fund the planned, wonderful activities. You can also support with a direct donation!

Join the PTA during our ongoing membership drive! Check out our website for details, or come to a PTA meetings or sponsored events.

We have a wonderful line up of events celebrating Hispanic Heritage month.

Sign up for an incredible after school club highlighting arts, language, science, and sports.

Come out and enjoy "Dinner and a Movie" night, Friday Sept 26th with other Woodlin families.

Let's Go Woodlin Wizards!

—Lynne Yao

LOG VOLUNTEER HOURS!

We're thrilled that you volunteer, but we need to keep a track of your volunteer hours—especially so MCPS sees how our hard work helps to continue student success. Record your hours in the log book found in the school office. Your time is too valuable!

NEXT PTA Meeting

Date: Tuesday,
October 7th

Time: 6:00 Pizza
6:30 Meeting

Place: Woodlin
All Purpose Room

Celebrate Hispanic Heritage Month

Woodlin students, teachers, and families will celebrate Hispanic Heritage Month, September 15 to October 15, 2008, through a series of events and activities including:

Woodlin's multicultural book collection has been enhanced with the purchase of additional Latino themed books. Woodlin's collection will be on display in the media center for students and teachers to read and check out.

An interactive display (across from the art room) featuring Latino indigenous cultures and curriculum connections in Latino music and art.

Spanish word of the day will be read over the intercom each morning during announcements.

Teachers will use these words throughout the month in classroom activities including creating word walls.

Town meeting activities including a read aloud acted out by students, learning to sing Happy Birthday in Spanish, and

learning to dance "Merengue." Cultural arts assembly "Cantare" on October 15th. Students will learn about the cultures that shape Latin American music--

Indigenous, European, and African. Performers will share captivating songs and rhythms in Spanish and Portuguese and demonstrate unique instruments such as donkey jaw, goat toenail rattle and armadillo shell guitar.

(continued on page 5)



PRINCIPAL'S CORNER

POSITIVE PARENT PARTNERSHIPS

We believe that family and school represent the primary environments in which young children grow and develop, and good schools value parental involvement. The foundation for good parent-teacher relationships is frequent and open communication, mutual respect, and a clear understanding of what is best for each individual child. In order to build a positive partnership between staff and parents/guardians, we must clarify and agree to roles and responsibilities involved in student learning.

Last spring, we held focus group meetings at Woodlin with staff members, our community of Latino- and African-American parents, and whole school communities to discuss what is working at Woodlin and areas for continued growth. This information was shared with the School Improvement Team (SIP) members (comprised of a teacher from every grade level, staff members, and six parents representing the diversity of our school community) this summer for review and action planning. This group reviewed the focus groups feedback and identified some targeted actions that would help us to move our partnerships from "good to great."

Three actions were explicitly developed: 1) A parent resource center [located in portable #3], 2) Participation in the Study Circles Program, and 3) A written chart [see page 7] to outline the responsibilities and expectations for staff and parents. This chart is a reminder that all members of our school community are held accountable for their agreed upon jobs.

This document was distributed at Back to School night and is also available on our website. In addition, the work we are doing to build positive parent partnerships was part of a feature on the channel 34 television show "Cover to Cover." You can find a



Principal Sarah Sirgo

link to the show on our homepage <http://www.montgomeryschoolsmd.org/schools/woodlines/>. Just click on "Spotlight on Woodlin."

School Improvement Goals and Planning

Woodlin continues to achieve at high levels. Standardized test data for grades 3, 4, 5, from spring 2008 indicate that 91.8% of all students achieved

at the proficient or advanced levels in reading and 87.2% of all students achieved at the proficient or advanced levels in math. While we celebrate our success, we continue to drill down and look at the performance of individual children as well as underperforming student subgroups. This summer, a team of staff and parents met to review the performance data for our school. Together, we developed targeted goals for improvement. Below are the school improvement goals for the 2009-2009 school year. If you have questions about these goals or would like to join us for a school improvement team meeting, please contact Mrs. Sirgo or Mr. Clarke. By June 2009, students at Woodlin Elementary will demonstrate an improvement in academic achievement as measured by the following target goals:

- 94% of all K-2 students will meet the benchmark on fall, winter, and spring m-class reading testing
 - 75% of African American and Latino students to score proficient ($\geq 75\%$ mastery) on math unit assessments for algebra and number relationships.
 - 5% of students who receive special education in grades 3, 4, 5 to score proficient or advanced on reading and math Maryland School Assessment (MSA)
 - Increase of 5% African American, Latino, and Free or Reduced Meal System (FARMS) students in grades 3, 4, 5 scoring at the proficient/advanced level on reading and math 2009 MSA
 - 80% of students will meet or exceed the 50%ile on Terra Nova Two (TN2) for reading, language, and math
 - 75 % of all students in grades 3, 4, 5 will meet or exceed the target mean score on Measures of Academic Progress in Reading (MAP-R)
- Sarah Sirgo

Changes in Behavior Code

Behavior Consequences and Recess

During the August Guidance Advisory Committee (GAC), a decision was made to address an issue that was repeatedly raised by parents...loss of recess. The two main concerns raised have been:

- ◆ Many of the students who may lose their recess need the opportunity to play the most and expend excess energy.

- ◆ Student obesity is on the rise and all children need frequent opportunities to exercise.

These are valid points that are shared concerns by many members of the GAC committee. While we continue to emphasize and see the power of positive reinforcement, we still believe that loss of recess is one of



Troy Clarke
Assistant Principal

the few alternatives we have readily available as a consequence.

Based on the feedback we received, the GAC decided to make a slight change to the amount of missed recess time when moved to red. Instead of losing the entire 30 minutes of recess, stu-

dents who are moved to red will **now lose 25 minutes**. This will give students 5 minutes to play or to meet with friends. Although 5 minutes is not a lot of time, it still gives students an opportunity to play, yet gives students a consequence for their actions. The recent change does not effect students who are moved to orange. Those students will continue to miss 10 minutes of recess.

The Behavior Matrix

The behavior matrix went home with all students on Friday, August 29th. The purpose of the behavior matrix is to give students, teachers, and parents clear behavior expectations and consequences for negative behaviors. During teacher pre-service week, teams made edits to the behavior matrix from the previous year. The last page of the behavior matrix document is the parent acknowledgement form. After reviewing the behavior matrix with your child(ren), the sheet should be signed by students and parents and returned. If you haven't returned it yet, please do it as soon as possible. If you have any questions about the behavior matrix, please feel free to contact Mr. Clarke or Mrs. Rosenberg.

—Troy Clarke

Girl Scout Troops Accepting New Girls

Our seven Woodlin Girl Scout troops are accepting fall applications for new members.



Membership in Girl

Scouts is open to girls ages 5-17 who join for fun and friendship, but they also find out about building character and self-esteem and serving their communities—the core qualities of Girl Scouting.

The Girl Scout program is based on the needs and interests of girls. Woodlin Girl Scouts are divided into: Daisy Girl Scouts (for kindergarteners and 1st grade); Brownie Girl Scouts (2nd and 3rd grade); and Junior Girl Scouts (4th and 5th grade).

Applications are accepted on a first-

come, first-serve basis for girls new to scouting. A new Daisy Girl Scout troop, for kindergarteners is being formed by Woodlin parent Evita Smedley. Ms. Smedley will need a second

troop leader and new girls for her troop.

To sign up your daughter or find out more, please contact Caren Madsen, Woodlin Elementary School Troop Organizer, at Carenmadsen@msn.com or call (301) 587-8128. If you e-mail, please include the following in your note: your name, your daughter's name and current grade. "New Girl Scout" in the subject line. We hope to see you and your daughter in the Woodlin Girl Scout family.

—Caren Madsen

Woodlin PTA Staff Board Members

As the Principal's Designees on the PTA Executive Board, it is our hope to provide a bridge between Woodlin staff and the

PTA. Attend-



Kate Bradshaw

ing the PTA meetings and Executive Board meetings allows us to share staff questions and concerns with



Jenni Smakula

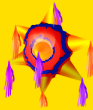
the PTA. In return, we can provide the staff with updates from the PTA. We are looking forward to working with the newly elected PTA Board to ensure a successful year for all Woodlin students!

—Kate Bradshaw and Jenni Smakula

Celebrate Hispanic Heritage Month

(continued from page 3)

Mrs. Sirgo will do an icebreaker at her staff meeting where teachers will take a quiz to test their knowledge of Latino culture.



Sligo Latin dance performance at the October PTA meeting on Tuesday October 7th OR Latin American fruit tasting.



Thank you to Woodlin teachers and parents for making all of this possible!

IF YOU WOULD LIKE TO VOLUNTEER WITH ANY OF THESE ACTIVITIES, PLEASE CONTACT KARLA SILVESTRE AT karlasilvestre@hotmail.com or 301-587-2752.

—Karla Silvestre,
Hispanic Heritage Month Coordinator

Hispanic Heritage Month Events Around Town

Looking for something to do with your kids on the weekend? Here are a few age appropriate Hispanic Heritage and multicultural events going on in our area:



The Smithsonian September 18–October 4th has numerous Hispanic Heritage Month activities. http://www.smithsonianeducation.org/heritage_month/hhm08/event_calendar.html

Health Fair and Soccer Tournament in celebration of Hispanic Heritage Month: Saturday September 20th soccer tournament begins at 9am and health fair begins at noon (event ends at 5 PM). Wheaton Regional Park near ice rink. Enter via Arcola Ave.

Montgomery County Public Libraries: September 20 12-2 PM Aspen Hill. Bolivian Folk Dancing and crafts.

Saturday October 4th 2 PM Long Branch will host "Cantare."

<http://www.montgomerycountymd.gov/apps/libraries/newsandevents/calendarofevents.asp>.

Fiesta Musical: Sunday September 21st 11am to 5 PM at the National Zoological Park.

Magical Montgomery: September 27th 1-7 PM Downtown Silver Spring (corner of Fenton and Ellsworth Drive). For more information visit <http://www.creativemoco.com/>.

Living and Working in Space Saturday October 4th 10-3 PM at the Air and Space Museum.

Artists Roundtable and Festival: October 4th 1-7 PM. Smithsonian American Art Museum.

Latin Jazz Celebration: Saturday October 4th 2-5 PM at the National Postal Museum.



Reading Is More Than Fundamental!

Woodlin's Junior Great Books program helps students with reading and critical thinking skills. The program is supported by the school and PTA, takes place during regular school hours, and is led by volunteer parents. Woodlin has parents who have been trained, but we definitely need more parent volunteers to continue this program this year.

In order to volunteer, you must attend a Junior Great Books training session. **Training is currently offered in Rockville on the following dates:**

October 22 from 9:00 AM to 3:00 PM (one Woodlin parent is already registered, so you can carpool!)

November 20 from 9:00 AM to 3:00 PM

These sessions fill up quickly, so you cannot wait to the last minute to sign up.

Parent volunteers also must commit to lead **at least one** group session of the Junior Great Books program at Woodlin, consisting of six, 45 minutes weekly sessions.

The PTA can reimburse the costs (but volunteers can make a donation to defer costs) for approximately the five parents who register. The registration is \$139. Contact Julie Kaplan at jubekaplan@starpower.net or 301-495-3129 for more information.

Remember, we can only offer this valuable program if additional parents volunteer!

—Julie Kaplan,
Junior Great Book Coordinator

Woodlin Jewelry Fundraiser

On Saturday, October 4, Amy Dixon, a parent of two Woodlin Wizards and co-founder of Dragonfly, a jewelry design business, will host an event to raise money for Woodlin PTA and collect food for needy families in the area. A box will be left at the door for a food donation. A percentage of Dragonfly's sales will go to the Woodlin PTA. The event at 1016 N. Noyes Drive will occur from 1 to 4 PM. Summer jewelry will be offered at special prices.

We look forward to helping our community and raising money for the fantastic Woodlin Wizards!

Please RSVP to 301-681-1496 or at amybethdixon@gmail.com.
—Amy Dixon

COMMUNICATION AND RELATIONSHIP BUILDING

| My Job (Staff) | Your Job (Parents/Guardians) | Our Job (Together) |
|---|---|--|
| <p>Let parents know that they can expect you to respond to e-mail or phone calls within twenty-four hours, and make sure parents know the Best contact number and e-mail and time of day to reach you</p> <p>Reach out to parents by making at least one personal phone call or contact per quarter to share something positive about a student</p> <p>Remember that some topics are better discussed face-to-face or in a phone call instead of e-mail. Use e-mail to share information, not concerns or have a discussion about students. Call or meet with parents to have interactive discussions about student learning and progress</p> <p>Respect student and family confidentiality.</p> <p>Talk about students and families privately and professionally (not in common areas, hallways, or the outer office)</p> <p>Be vigilant and sensitive to the social emotional well-being of students. Support students in making and keeping friends, resolving conflicts, and feeling positive. Tell parents if there are concerns</p> | <p>Take the initiative to get to know your child's teacher and stay in touch. If you cannot attend back to school night or other events held to introduce teachers and administrators to parents, then call to arrange a time to meet</p> <p>Wait to hear the full story before making judgments. Don't negatively assume the worst about a teacher or situation</p> <p>Let the teacher know what they are doing well</p> <p>Read the information that goes home and respond to requests for feedback in a timely manner</p> <p>If you think a staff member is not handling a situation well, do not tell that to the child. Ask for a meeting with the staff member to talk about it</p> <p>Try to get to know your child's close friends and their parents</p> <p>Reach out to the school and other parents if you feel your child is being teased or bullied by a student. Don't brush off concerns or overreact. Remember not to put the responsibility of addressing concerns solely on the teachers and staff</p> | <p>Listen first in order to understand</p> <p>Speak respectfully and kindly to each other and to children</p> <p>Understand that we may not always agree, but we both care about the success of students</p> <p>Speak positively and in support of one another. Respect each of our roles in the success of students</p> <p>Work together to help children feel safe, secure, and supported by all of the adults. Work with one another to ensure all students are well adjusted and happy children</p> <p>Do not assume that either of you knows what the other is thinking. Always take the time to clarify if there is a question</p> |

PROGRESS REPORTING

| My Job (Staff) | Your Job (Parents/Guardians) | Our Job (Together) |
|---|---|--|
| <p>Have clear and accurate information about student learning</p> <p>Tell parents if a child is struggling before a report card goes home</p> <p>Inform parents if a child is being referred for extra help or interventions</p> <p>Suggest resource (books, web sites, games, etc.) for parents to use in helping their children meet their academic challenges and reach their full potential</p> | <p>Review your child's data notebook and check their take home folder regularly</p> <p>Help your children with their work and keep tabs on what they are studying</p> <p>Talk to your child regularly about his or her progress in school. If you think your child is having difficulty, let the teacher know and be prepared to work together to solve the problem</p> | <p>Provide students with encouragement and multiple opportunities to learn information</p> <p>Recognize that children are unique and each child learns differently</p> |

VISITS

| My Job (Staff) | Your Job (Parents/Guardians) | Our Job (Together) |
|--|--|---|
| <p>Welcome parents into my classroom</p> <p>Greet parents by name and smile to say hello</p> <p>Let families know how they can be helpful and can ask for their assistance with specific activities</p> <p>Be careful not to make assumptions about a family member's level of knowledge, understanding, or interest</p> <p>Schedule an adequate amount of time for a meeting so that parents do not feel rushed</p> | <p>Call before you want to visit the classroom</p> <p>Respect the instructional day and do not drop into the classroom without an appointment</p> <p>Call if you cannot make an appointment</p> <p>Come to appointments or conferences on time</p> | <p>Respect each other's schedules and times.</p> <p>Be prepared for visits or conferences with questions and information to have meaningful discussions</p> |

GREEN TIP Save water by not running it while you brush your teeth!

Building Great Boys and Fun!

CALLING ALL 1ST TO 5TH GRADE BOYS!



We have a lot of fun and learn things along the way. Just a few of the fun things we do are: having camping trips, participating in pinewood derby, contributing to a cake contest, taking part in a Blue and Gold Dinner, going on field trips and much, much more! If you are interested in learning more, please contact: Mary Press at 301-588-3011 or mepress@starpower.net.

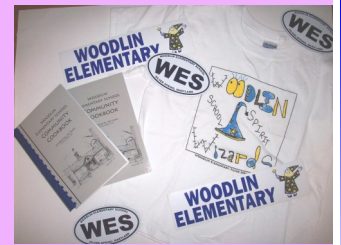
WOODLIN T-SHIRTS: GET THEM WHILE THEIR HOT!

Show how proud you are of our school by owning and wearing a student-designed Woodlin Wizards T-shirt!

Start the school year with spirit and style, in a clean crisp T-shirt, hot off the presses! Own more than one T-shirt, so you will always have a clean one ready for those important Woodlin events!

We still have some awesome Woodlin car magnets, cookbooks, and bumper stickers as well, so get them while they last!

The funds raised by the sales of all these items go directly to our own Woodlin PTA. Order forms can be



found on the Woodlin PTA website www.woodlinpta.org or contact Melita Flannery at wflannery@verizon.net.
—Melita Flannery

Applause! Applause! Applause!

The Woodlin community, thanks our school's staff for the wonderful illustrations on the walls.

Your contributions make our school a cheerier learning place.

—Lynne Yao,
PTA President



Woodlin After School Schedule

Club Session 1

October 2 to December 9

Tuesdays: 10/7, 10/14, 10/21, 10/28, 11/18, 11/25, 12/ 2, 12/9

Thursdays: 10/2, 10/16, 10/23, 10/30, 11/6, 11/13, 11/20, 12/4

Club Session 2

January 2 to February 26

Tuesday: 1/6, 1/13, 1/20, 1/27, 2/3, 2/10, 2/17, 2/24,

Thursdays, 1/8, 1/15, 1/22, 1/29, 2/5, 2/12, 2/19, 2/26

Club Session 3

March 24 to May 19

Tuesdays: 3/24, 3/31, 4.14.4.21, 4/28, 5/5, 5/12, 5/19

Thursdays: 3/26/4/2, 4/16, 4/23, 4/30, 5/7, 5/14, 5/21

Wanted: After School Coordinator

The coordinator will supervise and assist students involved in after school club activities and direct students to activities buses, parent pickup, or day care as designated. The coordinator will assist on Tuesdays and Thursdays from 3:00 until 4:30 PM (see after school club schedule). The clubs will continue to meet for three eight-week sessions, and the coordinator will be compensated \$1500 for the three, eight week sessions. If you are interested or have any questions, please contact: Abbi Lichtenstein at jams4@starpower.net or 301-587-1871.

QUICK AND EASY FUNDRAISING

Here are a few quick and simple ways to contribute to the Woodlin PTA.



Cut out the School Box Tops on cereal boxes and other products.

Be sure you have registered

your Giant and Safeway cards to Woodlin Elementary.

You have to renew each card every year.

When you shop online, use www.boxtops4education.com or www.schoolpop.com when shopping online. Part of your purchase can benefit Woodlin.



your Giant and Safeway cards to Woodlin Elementary.



Room Parents Needed

If you enjoy parties and want to be involved in your child's classroom being a Room Parent is just right for you. It's a fun job that doesn't require a lot of your time.

Here's what the job entails: 1) Welcoming new families to our school and your child's class. 2) Organizing the Halloween and Valentine's Day parties. 3) Coordinating the end of the year thank you for the teacher. 4) Forwarding information about upcoming events at our school.

One parent doesn't have to do it alone...share the job with another parent or two. In the past, we've had two and three room parents for one class.

If you're interested, let your child's teacher know ASAP or contact me: Mary Press at mepress@starpower.net or 301-588-3011.

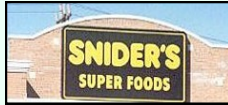
—Mary Press, Room Parent Coordinator

IMPORTANT SCHOOL DATES

- 9/26 Friday Dinner and Movie**
- 9/29 Monday Early Release Day**
- 9/30 Tuesday Rosh Hashanah NO SCHOOL**
- 10/7 Tuesday PTA Meeting 6:30-8:00**
- 10/9 Thursday Yom Kippur NO SCHOOL**
- 10/13 Monday Open House 8:30-11 AM**
- 10/17 Friday MTSA Conv. NO SCHOOL**

Shop and Help Woodlin

Remember to turn in your paper receipts from Snider's Supermarket to the PTA! We will total the amounts from all the receipts, and Snider's will generously donate back a percentage to Woodlin. Simply put your receipts (2008 only for now) in an envelope and return via backpack mail to the PTA. Or, put them in the box in the main office mailroom. Crumpled, wet, or torn receipts may be rejected. Don't wait! Turn in your receipts today!"



—April Osajima, Snider's Receipt Chair

Woodlin's Parent Resource Room

The purpose of the parent resource center (PRC) is to provide helpful "short cuts" for parents with information about the school as well as finding a doctor or a reliable contractor. If you have referrals for these types of services, please let us know. Referrals for services from friends are often the most reliable.

Currently PRC has information on polling sties, flu shots, MCPS budget, academic requirements, before and after school care, etc.

The PRC offers a nice setting for parents to meet and can be utilized as a meeting space for parents and staff. There is even an area for small children to play during meetings!

The goal for the PRC is to open three days a week, Mondays, Wednesdays, and Fridays from 9:00 AM until 12 noon and possibly some afternoons and evenings in the future.

The PRC needs donations including: a small refrigerator, copier, and microwave; gently used children's games and puzzles, books for all ages, etc. No donations is too small. If you're interested in making a donation or volunteering to staff the PRC, please contact Shelly Duckett at duckettshelly@yahoo.com.

—Shelly Duckett, Parent Resource Room Coordinator

WOODLIN PTA MEMBERSHIP APPLICATION

Parent/Guardian #1:

Parent/Guardian #2:

Student name:

Teacher:

Telephone: _____ E-mail: _____

Add my e-mail address to the Woodlin PTA listserv.

Number of PTA members: _____ x \$10 = \$ _____

Tax-deductible donation (PTA membership not required): \$ _____

TOTAL ENCLOSED: \$ _____

Please return this form with cash or check written to the Woodlin PTA, and send back to school in your child's backpack in an envelope marked PTA MEMBERSHIP